

Instruction Manual

Thank you for purchasing this product. Before using this product please read the instructions carefully. After reading the instruction sheet, please keep it with you for reference.

Although the instruction manual states that the products is for the PlayStation®4 system, it is also compatible with the PlayStation®3 system. Please also refer to our website (<http://www.hori.jp/support/>) for additional information.

Troubleshooting

1 Pressing the PS button does not turn on the PlayStation 4 system

The PS button on this product will not turn on the PlayStation 4 system. Please press the PS button on the wireless controller (DUALSHOCK 4) or press the power button on the PlayStation 4 system.

2 The PS button does not respond during gameplay

Please check the PS4/PS3 System Toggle Switch on this product. Make sure it is set to "PS4" for PlayStation 4 and "PS3" for PlayStation 3. Set to "PS3" when using PC (Gamepad mode) and "KBD" when using PC (Keyboard mode).

3 Controls respond in the home screen but not during gameplay

For the PlayStation 4, controls will not respond if the user account is different from the one used at the start of the game. Make sure to always log in with the same user account.

4 The controller will not respond upon pressing the PS button

You must first pair this controller with the PlayStation 4 system using a wireless controller (DUALSHOCK 4).

Includes



Caution



- Keep this product out of the reach of children under 3.
- Keep this product away from small children. Seek medical advice immediately if it is swallowed.
- Keep the controller away from dusty or humid areas.
- Do not apply strong impact or weight on the product.
- Do not pull roughly or bend the cable of the controller.
- Please do not pull on the buttons of this product.
- Never disassemble, repair or modify this product.
- If product needs cleaning, use only a soft dry cloth. Do not use any chemical agents like benzene or thinner.
- Do not use this product for anything other than its intended purpose. We are not responsible for any accidents or damages in the event of use other than the intended purpose.
- Since it may cause failure, do not touch the stereo headphone/microphone/USB mouse terminals directly.
- Please do not look directly into the red optical sensor. There is the possibility for eye damage.

Compatible models

PlayStation®4 / PlayStation®3 / PC

Important

Before using this product with PlayStation4 and PlayStation3, be sure to check the instruction manual of each hardware console.

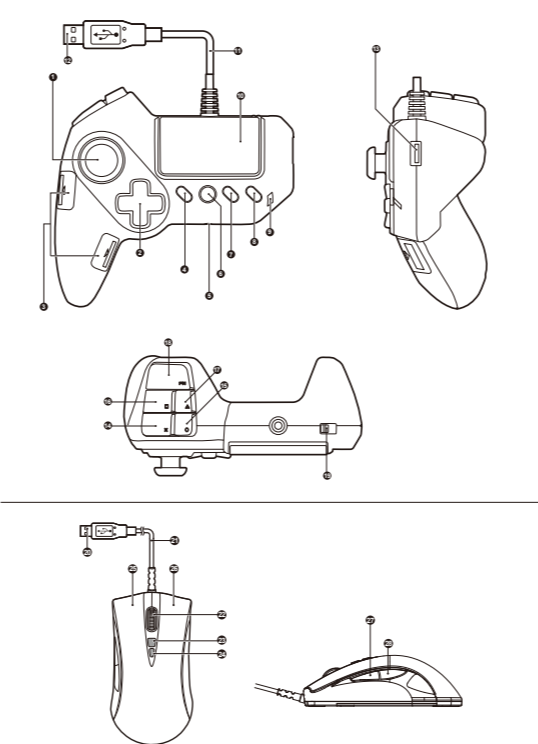
Hardware	Windows®10 / 8.1 / 8 / 7 USB port, Internet Connection
System Requirements	Windows®10 / 8.1 / 8 / 7 USB port, Internet Connection
TAC Software	
System Requirements	iOS, 8.0 or later / Android, 4.4 or later
Functionality as PC controller through Wi-Fi	This product does not support this function.

Depending on the console software version, not all functions may be available. In that case, please upgrade to the latest system software before use. (PlayStation 4... Ver. 4.73 or later recommended, PlayStation 3... Ver. 2.80 or later recommended) Please refer to your console's user manual for system software version check and update instructions.

This product does not feature light bar, motion sensors. In addition, this product does not support features other than those described. Please note this product may not support some PlayStation®4 and PlayStation®3 standard software. For details, please visit our website (<http://www.hori.jp/>) or contact us.

- *This product will not work on the PlayStation®2, PlayStation®, or PS one.
- *This product is not a wireless controller or wireless mouse.

Part names



PlayStation®4	PlayStation®3	PC (Gamepad mode)	PlayStation®4 / PC (Keyboard mode)
Left analog stick Long Press: L3 button *	Left analog stick Long Press: L3 button *	Left analog stick Long Press: L3 button *	W/A/S/D Key Long Press: LEFT SHFT *
Directional Pad *			1/2/3/4 Key *
Hand Strap Mounting Position (Attached at time of purchase)			
SHARE Button	SELECT Button	BACK Button	TAB Key
Expansion port		Windows Key	
PS Button*		GUIDE Button	Windows Key
OPTIONS Button	START Button		ESC Key
Profile Button			
Profile LED			
Touch pad functionality *	X Button *	A Button *	M Key *
Controller cable (3.0m / 9.8ft)			
Connector			
USB port			
X Button *	A Button *	SPACE Key *	
O Button *	B Button *	LEFT CTRL Key *	
□ Button *	X Button *	R Key *	
△ Button *	Y Button *	Q Key *	
FN Button *			
PS4™ / PS3™ System Toggle Switch			
Connector			
Mouse Cable (1.0m / 3.3ft)			
Scroll Wheel/Long Press: RB button Scroll Wheel/Short Press: RB button	Scroll Wheel/Long Press: RB button Scroll Wheel/Short Press: RB button	Scroll Wheel/Long Press: RB button Scroll Wheel/Short Press: RB button	Scroll Wheel/Long Press: RB button Scroll Wheel/Short Press: RB button
Sensitivity Up			
Sensitivity Down			
R2 Button *	R1 Button *	R Button *	Left click *
L2 Button *	L1 Button *	LT Button *	Right click *
L1 Button *	L2 Button *	LB Button *	Forward *
R1 Button *	R2 Button *	RB Button *	Back *

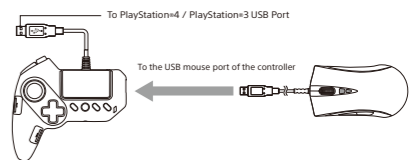
PS Button *	L1 Button *	L2 Button *	LB Button *	X Key *
PS Button *	Quick Button *			G Key *
PS Button *	R1 Button *	R2 Button *	RB Button *	E Key *
PS Button *	Snipe Button *			V Key *

* - - - Other buttons may be assigned. (To assign button function, please refer to the Assign Mode instructions.)
*The PS button will not turn the PlayStation 4 or PlayStation 3 system's power on.

How to connect

- Insert the USB connector of the mouse into the USB port of the keyboard controller. In addition to the included mouse, other USB compliant mice may be used.
*Not compatible with all mice. *Compatibility not tested nor endorsed by Sony Interactive Entertainment Europe.
- Please insert the USB connector of the controller into the USB port of the PlayStation 4.
*Please set the PS4™/PS3™ System Toggle Switch to the desired console before connecting the product.
- Once the system is turned on, press and hold the PS button on the HORI controller.
- Select a User Profile with the HORI controller to activate the controller as Player 1 or Player 2.
*Select "Guest" or a different User Profile with the HORI controller to activate the controller as Player 2.

- If your controller is not being recognized by your PlayStation 4, please try the following steps:
 - Check to see if your console has the latest updates on your firmware and software.
 - Restart your console.
 - Unplug and re-plug your HORI controller into your PlayStation 4.
 - Follow steps 1-3 of "How to Connect"



PlayStation®4 / PlayStation®3 System Toggle Switch

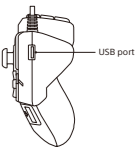
The System Toggle Switch toggles between PlayStation 4 and PlayStation 3 compatibility. Switch the toggle switch to the desired platform before connecting.



USB port

This product has one USB port specifically for connecting a mouse.

- *Please do not plug in anything besides a mouse.
- *There is no guarantee that anything besides a mouse will function.
- *Because there is protection against excess electrical current use, do not plug in any type of USB memory or USB charger.
- *Please note that we cannot be held responsible for any type of data loss due to user misuse.
- *This product uses up to 200mA.
- *If a connected product is not functioning properly, it may be due to protection against excess electrical current. Please try unplugging the mouse from the keyboard and the keyboard from the PlayStation 4 console and reconnecting everything again. If it still does not function, please use another device.



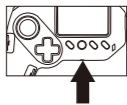
About the Mouse

- The included mouse uses an infrared sensor.
- *The infrared sensor may not function properly on top of the following materials.
 - Transparent material such as glass
 - Reflective material such as a mirror
 - Red color material
 - Mesh or any similarly patterned material

- Please do not look directly into the red optical sensor. There is the possibility for eye damage.

Expansion port (PlayStation®4 only)

Connect the headset into the Expansion port. Before placing a headset onto your ears, make sure to lower the volume completely.

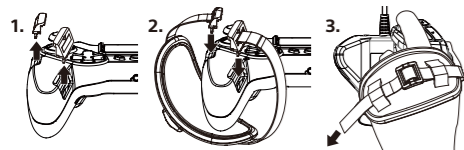


- Headset usage at high volumes for extended periods of time may result in permanent hearing damage.
- If the volume is raised too high, there may be sudden loud noises that may damage your ears.

How to adjust the hand strap

By attaching the supplied hand strap to the controller, the grip will be secure. All fingers of the left hand can press buttons (○→).

- Remove both controller clips.
- Thread the straps into the clips adjusting for hand size.
- Reattach clips to controller.



Assign Mode (Button Assignment) Function

Each button function can be changed using the TAC Software.

Buttons marked with * in "Part names" can be assigned

Button functions that can be assigned

PlayStation®4	PlayStation®3	PC (Gamepad mode)
<ul style="list-style-type: none"> Directional Pad Analog Stick Left analog stick Right analog stick 	<ul style="list-style-type: none"> Directional Pad Analog Stick Left analog stick Right analog stick 	<ul style="list-style-type: none"> A, B, X, Y, LB, RB, LT, RT, L3, R3, START, Walk, Quick, Snipe, FN, NC (No function)

PC (Keyboard mode)

Alphabet	A-2
Number	0-9
Function	F1-F12
Special key	Esc, Tab, Caps Lock, Shift, Ctrl, Alt, Space, Enter, Back Space, Delete
Analog Stick	↑ ↓ ← →
Other	Print Screen, Scroll Lock, Pause/Break, Insert, Home, Delete, End, Page Up, Page Down
Numeric keypad	Num Lock, Num+, Num-, Num*, Num/, NumEnter, Num., Num0-Num9
Original	NC (No function), FN
Mouse function	Right Mouse Button, Left Mouse Button, Scroll Wheel, Forward, Back, Scroll up, Scroll down

Profile Change Function

Button layouts for the PlayStation 4, PlayStation 3 and PC (Gamepad mode, Keyboard mode) can be saved to 8 different profiles. Profiles can easily be switched.

<How to switch>

While holding down on the Profile button, tilt the Direction Pad (30 "Up" or "Down" to switch between profiles.

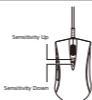
Back	Profile	Profile LED
	1	Lights off
	2	Green
	3	Yellow
	4	Red
	5	Purple
	6	Blue
	7	Light blue
Forward	8	White

Mouse Sensitivity Adjustment

Mouse sensitivity can be adjusted with 4 increments.

<How to set>
Press the (+) button to increase or (-) button to decrease dpi.

dpi	1600	2000	2800	3200
-----	------	------	------	------



FN Button

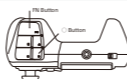
While pressing the FN button and specific button (Key), the function of the specific button (Key) will switch temporarily. Refer to the chart below for button pressed and corresponding function.

	PlayStation®4	PlayStation®3	PC (Gamepad mode)	PlayStation®4 / PC (Keyboard mode)
PS Button *	L1 Button *	L2 Button *	LB Button *	X Key *
PS Button *	Quick Button *			G Key *
PS Button *	R1 Button *	R2 Button *	RB Button *	E Key *
PS Button *	Snipe Button *			V Key *

* - - - Other buttons may be assigned. (To assign button function, please refer to the Assign Mode instructions.)

Quick Button

Pressing the quick button maximizes mouse output value. Movement of the mouse translates to maximum lateral movement of the first person view. Select from 4 settings within the TAC Software to adjust maximum movement speed.



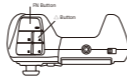
Walk Button

Pressing the left analog stick keys while holding the Walk button is similar to slightly tilting the left analog stick of a conventional controller.

Functions that are not equipped by default can be set using the TAC Software.

Snipe Button

Hold the Snipe button to temporarily reduce mouse sensitivity for increased accuracy. Sensitivity can be adjusted using the TAC software.



Touchpad Functionality

This product features DUALSHOCK™4 Touchpad functionality. The area of the touch pad is as shown below.

The area of the touch pad (PlayStation®4)

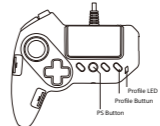


PlayStation®3	PC (Gamepad mode)	PC (Keyboard mode)
X Button X Button	A Button A Button	M Key M Key
X Button X Button	A Button A Button	M Key M Key

Defaults (button assign, sensitivity settings)

How to reset to default settings (all profiles)

- Press and hold down the Profile button and PS button simultaneously for 3-5 seconds.
- Reset is complete once the profile LED flashes.



How to use the TAC Software

"HORI Device Manager"

System Requirements
iOS: 8.0 or later
Android: 4.4 or later

<How to download>

- For iOS
 ① Search for "HORI" or "HORI CO., LTD." in the APP Store.
 ② Install "HORI Device Manager".
- For Android
 ① Search for "HORI" or "HORI CO., LTD." in Google Play.
 ② Install "HORI Device Manager".

*Make sure the developer is "HORI CO., LTD."
 *Make sure Bluetooth on your equipment is turned on. Press "Allow" when prompted access to location, photo, media, file. Pairing is completed by press "Search" and touching the item found online.

The following functions can be set using the TAC Software.

- Assign Mode (Button Assignment) Function
- Mouse Acceleration Adjustment
- Mouse Acceleration Adjustment
- DP / LS Toggle Switch
- Deadzone Adjustment
- ADPS (Aim Down Sight) Deadzone Adjustment
- ADS Lock Feature
- Turning Off Backlight
- Default (button assign, sensitivity settings)
- Linear Correction Function
- Acceleration Curve Function

PRODUCT NAME : TACTICAL ASSAULT COMMANDER G2 for PlayStation 4 / PlayStation 3 / PC
 MODEL : PS4-120
 Manufacturer : HORI (H.K.) CO., LTD.
 Enterprise Standard : Q/XY01-2016
 MAIL : key_support@hori.jp
 MADE IN CHINA

● The image on the package may differ from the actual product.
 ● The manufacturer has the right to change the size of the product without any notification.
 ● "PlayStation", "PS one" and "DUALSHOCK" are registered trademarks of Sony Interactive Entertainment Inc.
 ● "i" and "Android" are registered trademarks of Apple.
 ● All other trademarks are the property of their respective owners.